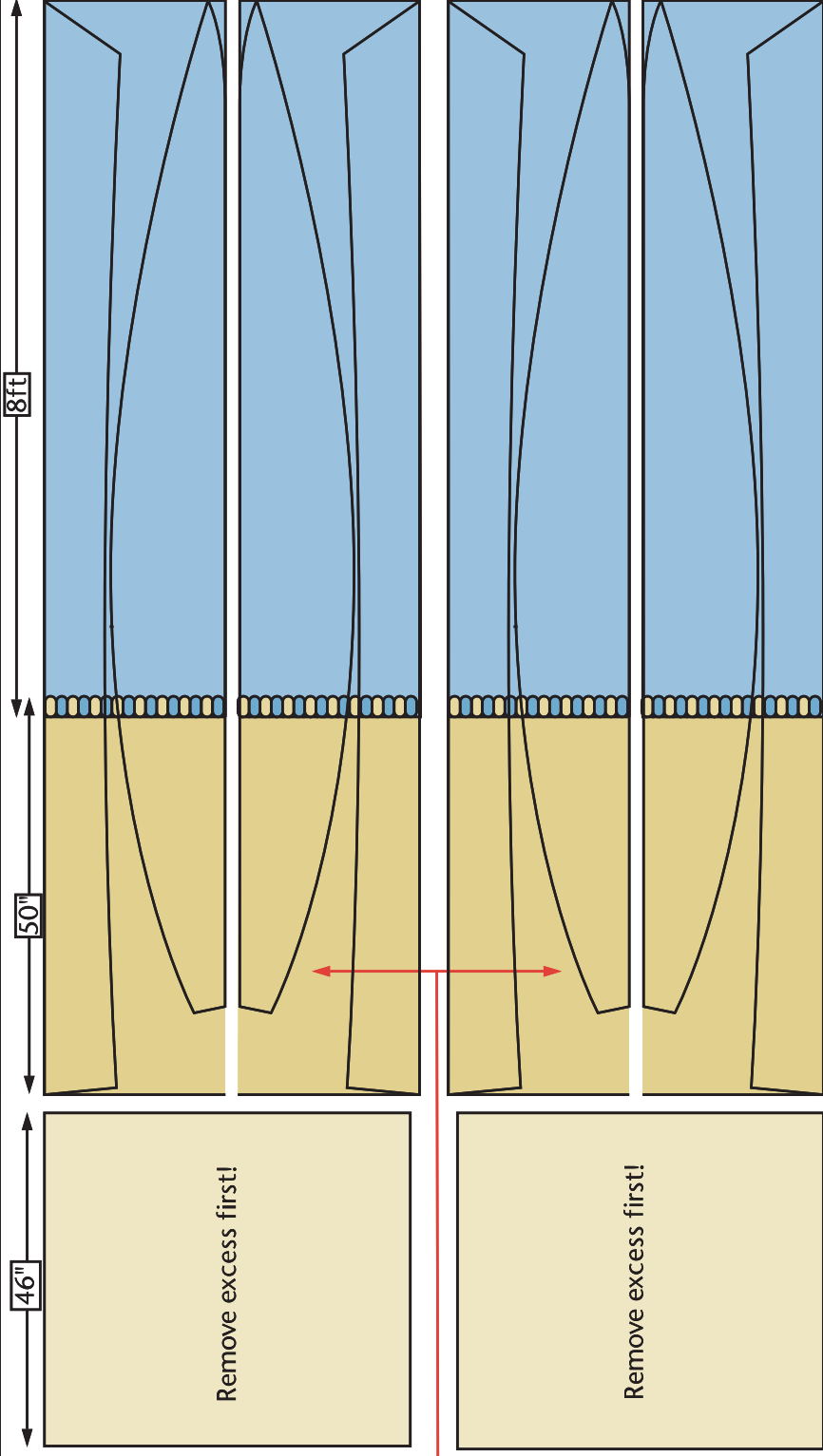
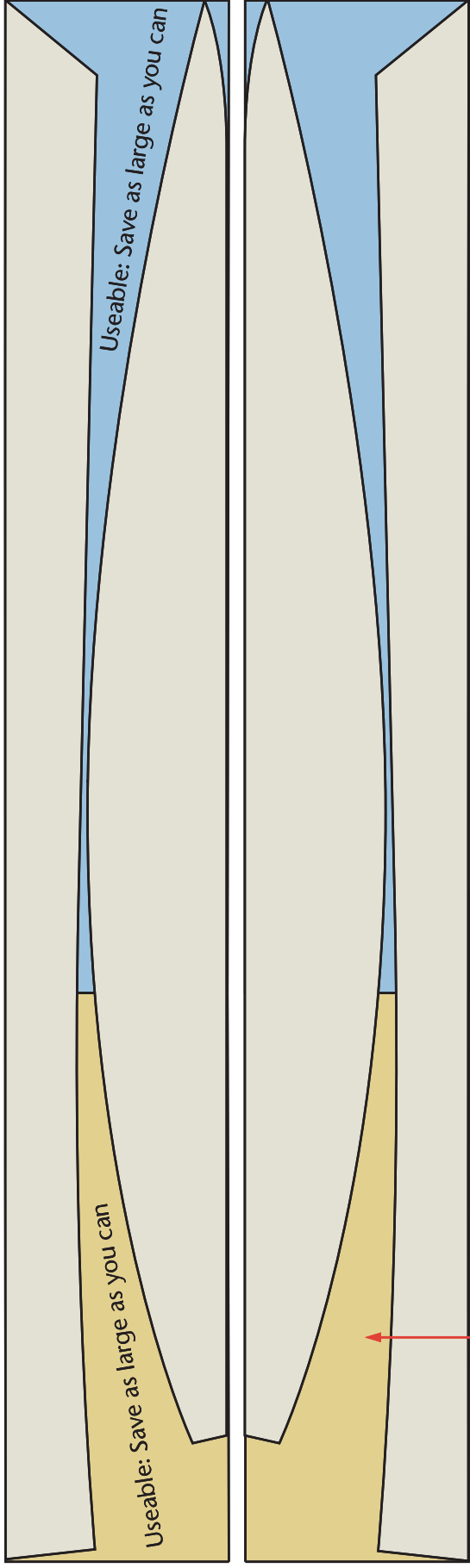
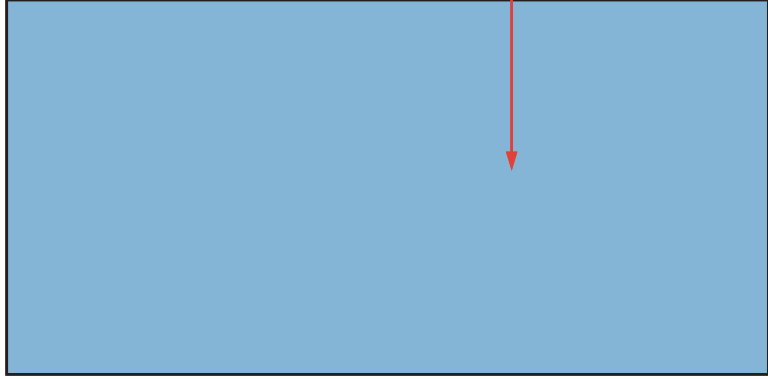


Cut and save full width of section before cutting length wise

A full set of construction panels laid out to show the relationship of each and to show the areas of scrap and unused material for use in the interior parts of the hull.

Note: The hull can be made from 6mm ply if subjected to abuse from rocky waters



Two sheets of 4mm plywood for one hull with reserve wood and useable scrap for interior parts.

Four sheets of 4mm plywood for two hulls with reserve wood and useable scrap for interior parts.

A third or fifth sheet of 4mm plywood for insurance when building either one or two hulls